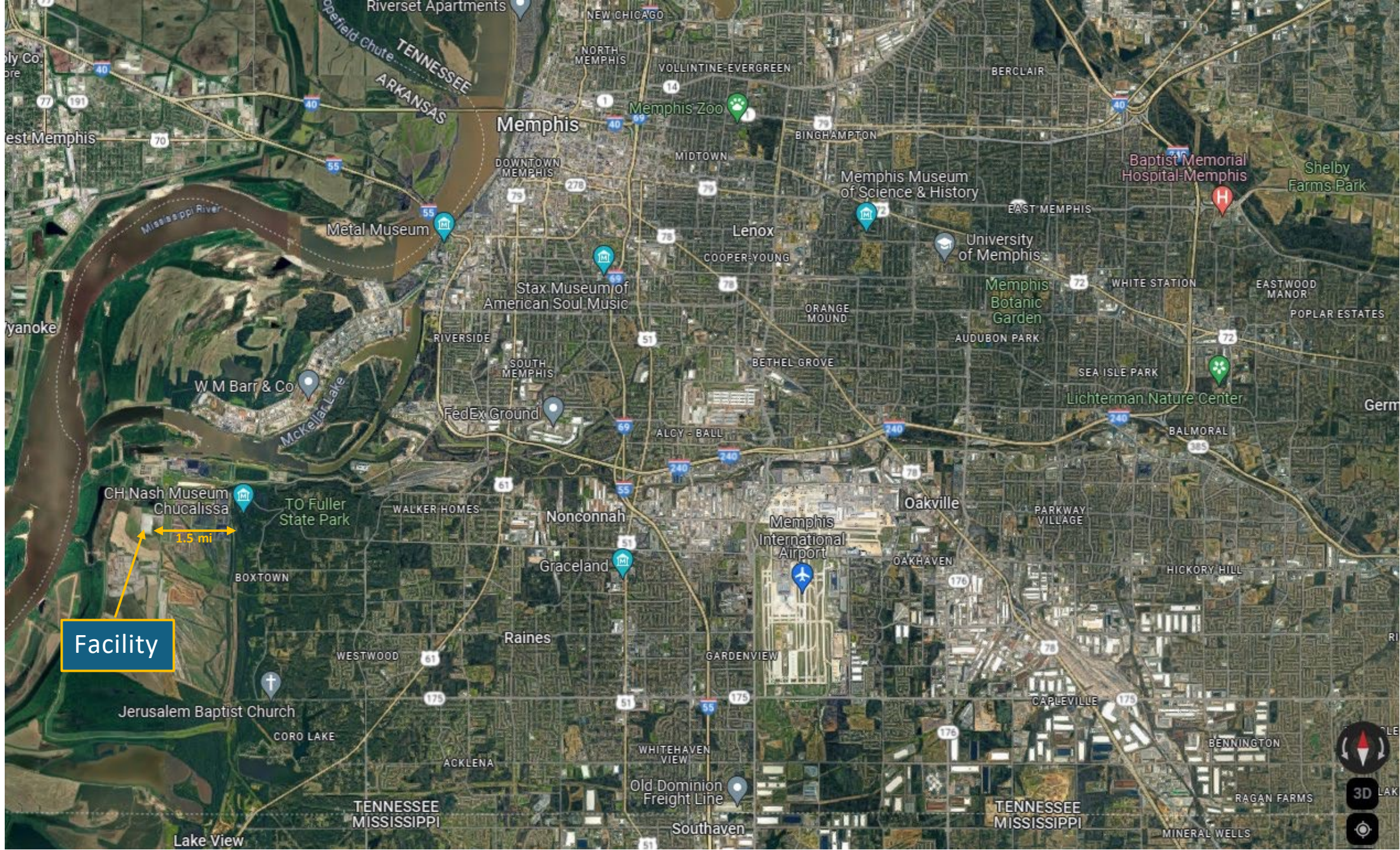


Community Q&A on xAI



Southwest Tennessee Community College
August 10, 2024



Facility

1.5 mi





Effluent Discharge

TE Maxson Wastewater Treatment Facility Offices
Maxson Wastewater Treatment Plant

TVA Allen Fossil Plant

CMC Container Maintenance Corp
TVA Allen Combined Cycle
TVA Combined Cycle Plant

Bordeau Metals

Former Electrolux Facility

CH Nash Museum Chucalissa

Riverport Rd

Plant Rd

TO Park

Frank Pigeon Industrial Park

Future (2025)
Electric
Substation
150 MW capacity

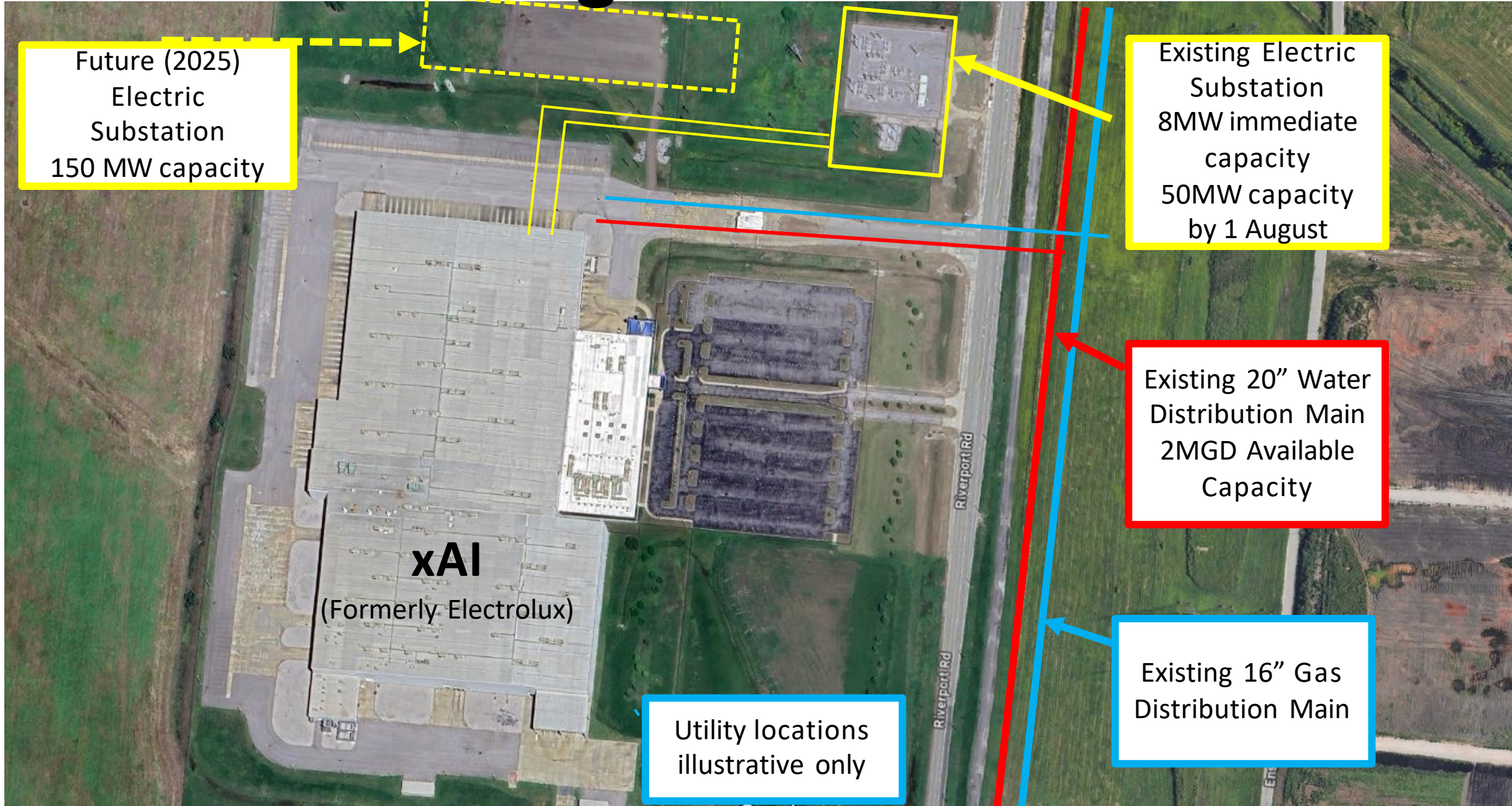
Existing Electric
Substation
8MW immediate
capacity
50MW capacity
by 1 August

Existing 20" Water
Distribution Main
2MGD Available
Capacity

Existing 16" Gas
Distribution Main

xAI
(Formerly Electrolux)

Utility locations
illustrative only

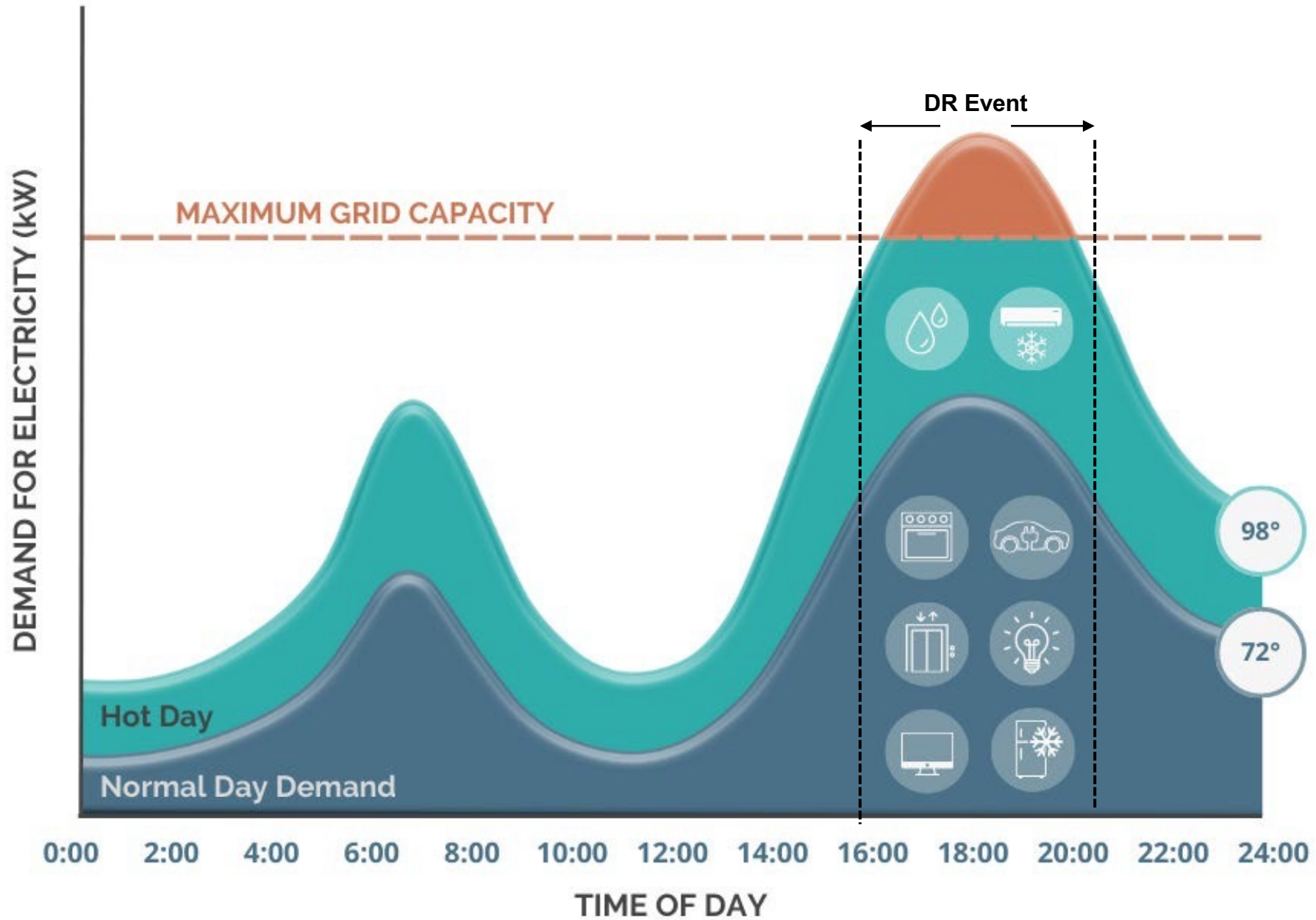


How will we ensure enough power is available for existing customers

- Through a **demand response** program.
- **Demand Response** (DR) programs are contractual agreements with large customers to reduce their electricity consumption temporarily during high-demand periods to maintain reliability of the grid.
- Typical events are only between 2–4 hours long and occur only a few times per year, so disruption to businesses is very minimal
- TVA/MLGW coordinates Demand Response agreements with large customers
- MLGW has advised TVA that participation in DR is expected.

How will we ensure there is no impact on our ability to distribute power for existing customers

- Through a system impact study.
- No impact from 50MW
- \$1.7M improvements to a transmission line (upgrading size of a transmission line)



MLGW, xAI, and Water

- As other entities have done in the past, xAI could have made application to the Shelby County Water Board for a permit to install wells and use unmetered water for their plant
- During the initial meeting, MLGW conveyed, and xAI agreed, that using metered water from MLGW was the right first step.
- xAI quickly agreed that exploring other options for cooling water was in the best interest of the company and the community.
- MLGW delivers an average of 150 –170 MGD to customers, this would add ~1 MGD to that demand. **MLGW all time peak 342 MGD 8/29/00**

Graywater, TVA, CoM, and xAI

- Process underway to determine most appropriate style treatment plant
 - Different styles have different costs, but also have variability the quality of end product.
- Planning assumption: plant sized to produce 10 MGD of useable water. Sufficient to serve typical demands from TVA, CoM, xAI and future customers.

Questions

